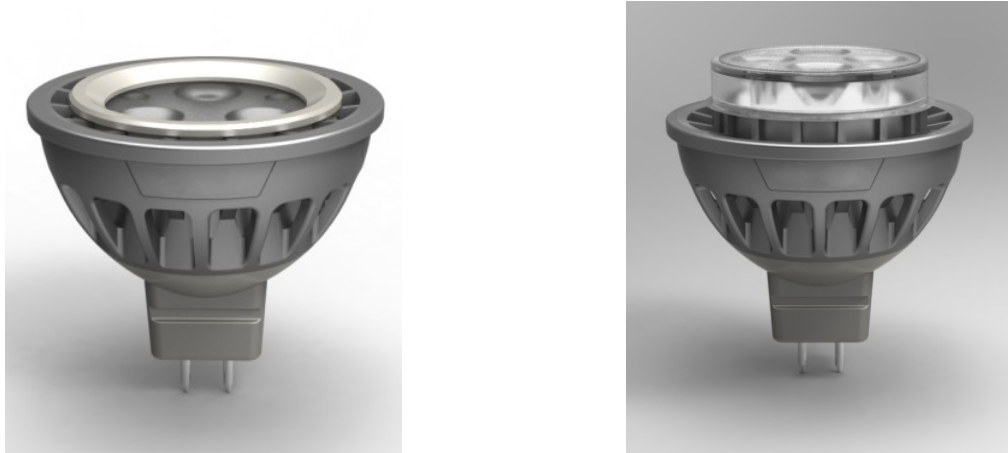




MANUAL OF LED SPOTLIGHT (MR16)



I. Main Features

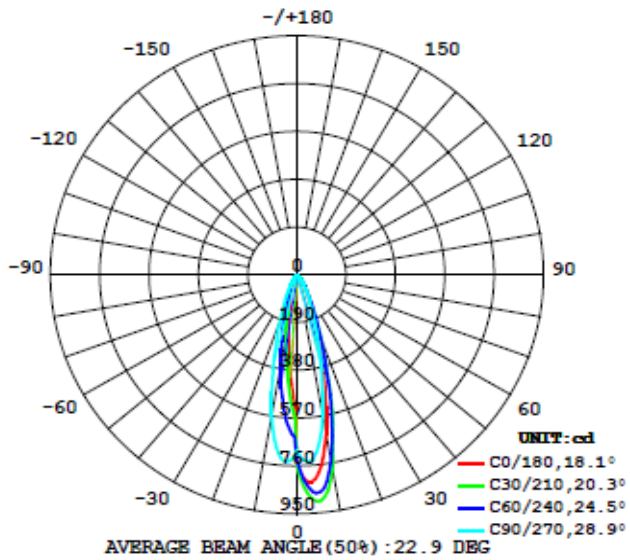
1. Energy saving up to 80% in electricity consumption compared with traditional halogen spotlight.
2. Environment friendly, no UV or infrared radiation, mercury free.
3. Instant on without delay, flicker-free.
4. Highly reliable Constant Current Drive ensures a long lifespan of the LED
5. Easy installation, ideal for direct replacement of traditional halogen spotlight
6. Maintenance free, extra long lifespan of over 50,000 hours
7. Suitable for applications in hotel, supermarket, museum, commercial shops, etc.

II. Technical Specifications

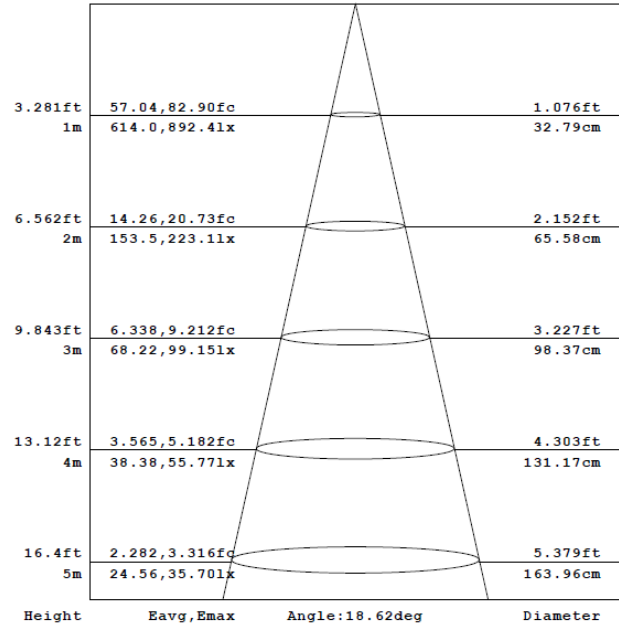
Model No.	TA-SL-04M			TA-SL-06M		
Order No.	TA-SL-04M-WW	TA-SL-04M-PW	TA-SL-04M-CW	TA-SL-06M-WW	TA-SL-06M-PW	TA-SL-06M-CW
Dimension	Φ50×H45mm			Φ50×H56mm		
Power	4W			6W		
Input Voltage	12VAC/DC			50/60Hz		
Light Source	3pcs(CREE XPE)			4pcs(CREE XPE)		
CCT	2700-3700K	4000-5300K	5500-6700K	2700-3700K	4000-5300K	5500-6700K
Luminous Flux	210-280 lm			280-365 lm		
CRI (Ra)	≥75			≥75		
Mount Base	MR16			MR16		
Beam Angle	25°±2 (45° & 60° available)					
Working Temperature	-20℃~40℃ (≤95%RH)					
Housing Material	Aluminum & PC Cover					
LED Lifespan	≥50,000 hrs					
Certificate	 					

III. Distribution Curve

Luminous Intensity Distribution Diagram



Lux Report



IV. Applications



Application Instance



T&A - Smart LED Lighting Solution